



## Windmill Road, Brentford

A large two-bedroom, two-bathroom garden flat set on Windmill Road which is just a short walk from Northfields tube station.

In brief, the property is 700 sq ft in size, in good condition and has two large double bedrooms, two bathrooms (one en-suite) and large open plan kitchen/reception with French doors leading directly onto a large private westerly facing garden.

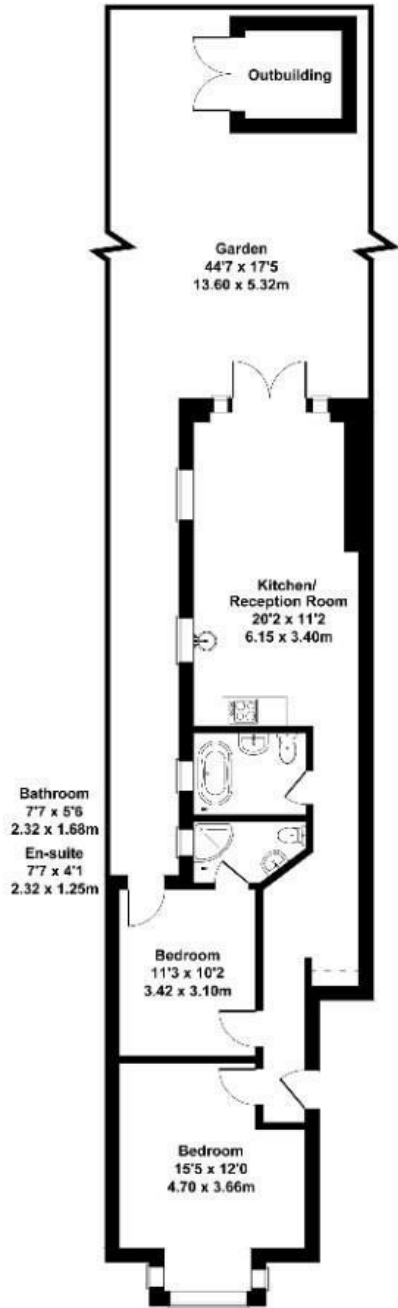
Further benefits are great light, potential to extend and no onward chain.

£480,000

- Garden Flat
- Period conversion
- Two double bedrooms
- Two bathroom
- No chain
- Share of freehold to come.
- Large private westerly facing garden
- Potential to extend
- Short walk to Northfield Tube station
- Low service charges

# Windmill Road

Approximate Gross Internal Area  
700 sq ft - 65 sq m  
(Excluding Outbuilding)



## GROUND FLOOR

Not to Scale. Produced by The Plan Portal 2024  
For Illustrative Purposes Only.

Energy Efficiency Rating		
	Current	Potential
<i>Very energy efficient - lower running costs</i>		
(92 plus) <b>A</b>		
(81-91) <b>B</b>		
(69-80) <b>C</b>		
(55-68) <b>D</b>		
(39-54) <b>E</b>		
(21-38) <b>F</b>		
(1-20) <b>G</b>		
<i>Not energy efficient - higher running costs</i>		
<b>England &amp; Wales</b>	EU Directive 2002/91/EC	